

VASO INERZIALE INOX HE

316 L STAINLESS STEEL D.H.W. ACCUMULATION TANK



APPLICATION

Production and storage of sanitary hot water.

MATERIAL

Stainless Steel 316 L suitable drinkable water according to D. M. n. 174 dated 06.04.04.

INSULATION

Ecological hard polyurethane foam with high thermal insulation. For models >500 NOFIRE polyester fibre 100% made of recyclable material, with high thermal insulation. Fire resistance class B-s2d0 according to EN 13501. PVC external lining complete with top and flange cover.

CATHODE PROTECTION

Magnesium anode- Models > 1500 n° 2 magnesium anodes.

DRAIN

External confluence through drain connection.

GASKET- FLANGE PLATE

Silicone gaskets suitable for alimentary use for max temperature up to 200°C. Inspection flange plate in stainless steel.

WARRANTY

- 5 years- See general sales conditions and warranty.

ACCESSORIES AND SPARE PARTS

See Accessories section for the entire list.



Designed according to 2009/125/CE Directive (ErP – Eco-friendly Plan Specification), HE series are already compliant with Regulation n. 814/2013, that demands C-energy efficiency class from September, 26th 2017.

VASO INERZIALE XB-XC HE

ENERGY EFFICIENCY CLASS

Model	D.H.W. Storage: STAINLESS STEEL	
	Art. Nr.	
200	3060052140422	C
300	3060052140423	C
500	3060052140424	C
800	3060052140425	C
1000	3060052140426	C
1300	3060052140427	C
1500	3060052140428	C
2000	3060052140429	C

VASO INERZIALE INOX XC



VASO INERZIALE XC

ENERGY EFFICIENCY CLASS

Model	D.H.W. Storage: STAINLESS STEEL	
	Art. Nr.	
1500	3060052140408	F
2000	3060052140409	F
2500	3060052140410	
3000	3060052140412	
4000	3060052140414	
5000	3060052140416	

VASO INERZIALE COMPACT XC

Model	D.H.W. Storage: STAINLESS STEEL
	Art. Nr.
2500	3060052140411
3000	3060052140413
4000	3060052140415

— Accessories on request —

“Easy Control” Electronic Display

See accessories section



Monophase and Threephase electric resistances

See accessories section

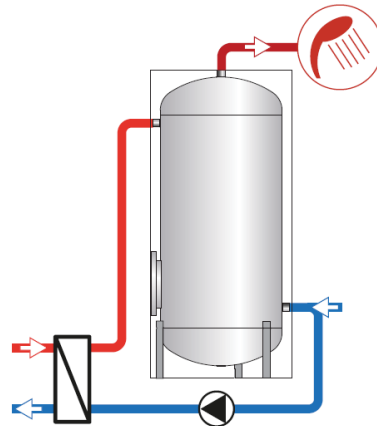
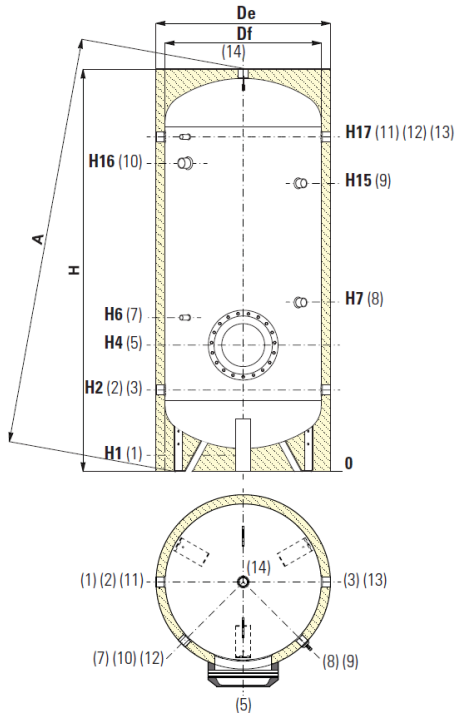


VASO INERZIALE INOX HE

316 L STAINLESS STEEL D.H.W. ACCUMULATION TANK

STORAGE	
Pmax	Tmax
6 bar	95 °C

CORDIVARI®Lab
 TÜV Rheinland
 Energie und Umwelt
 GmbH states that test
 procedures and Cordivari LAB are
 certified conforming to European
 standard EN 15332, as indicated
 by Ecodesign ErP Directive.



COMPLETE YOUR SYSTEM WITH THE NEW PRS MODULE (FOR IMMEDIATE DHW PREPARATION)



SEE HYDRONIC SECTION

1	Drain 3/4" Gas F for capacities from 200 to 1000 lt; 1" Gas F for models > 1000
2	Domestic cold water circuit inlet / To the plate heat exchanger
3	Alternative D.H.W. inlet / To the plate heat exchanger
5	Blind flange for inspection
7	Connection for instrumentation 1/2" Gas F
8	Connection for magnesium anode 1"1/4 Gas F
9	Connection for 2nd anode 1"1/4 Gas F (for models > 1500)
10	Connection for electrical immersion 1" 1/2 Gas F for models > 800 connection 2" Gas F
11	Recirculation / from plate heat exchanger
12	Connection for instrumentation 1/2" Gas F
13	Recirculation or domestic hot water outlet
14	Domestic hot water outlet

Model	Net Volume [litres]	Df	De	De (HE SERIE)	H	A	[mm]					
							H1	H2	H4	H6	H7	
200	190	450	//	550	1451	1477	81	316	341	511	701	
300	293	550	//	650	1569	1602	149	409	434	604	794	
500	503	650	//	750	1861	1899	141	426	451	621	811	
800	795	790	//	990	1943	1993	113	428	483	623	863	
1000	911	800	//	1000	2212	2297	112	437	492	632	922	
1300	1272	950	//	1150	2193	2255	118	433	488	628	918	
1500	1401	1000	1100	1200	2127	2245	112	447	502	642	982	
2000	1980	1250	1350	1450	2049	2205	134	529	574	714	1004	
2500	2320	1250	1350	//	2299	2617	134	529	574	714	954	
3000	2925	1250	1350	//	2799	3065	134	529	574	714	1014	
4000	3776	1400	1500	//	2872	3195	117	557	602	742	1022	
5000	4995	1600	1700	//	2909	3320	94	564	609	749	1019	

COMPACT Model	Net Volume [litres]	Df	De	De (HE SERIE)	H	A	[mm]					
							H1	H2	H4	H6	H7	
2500	2635	1400	1500	//	2122	2542	117	557	602	742	982	
3000	3038	1500	1600	//	2131	2606	106	556	601	741	981	
4000	4002	1600	1700	//	2409	2892	94	564	609	749	1029	

Model	H15	H16	H17	5	1	2 3 11 13	7 12	8	9	10	14	Connections Gas F					
												[mm]					
200	//	1066	1176	Øe 180	3/4"	1"1/4	1/2"	1"1/4	//	1"1/2	1"1/4						
300	//	1159	1269	Øe 180	3/4"	1"1/4	1/2"	1"1/4	//	1"1/2	1"1/4						
500	//	1380	1536	Øe 180	3/4"	1"1/4	1/2"	1"1/4	//	1"1/2	1"1/4						
800	//	1382	1538	Øe 240	3/4"	1"1/4	1/2"	1"1/4	//	1"1/2	1"1/2						
1000	//	1642	1797	Øe 240	3/4"	1"1/2	1/2"	1"1/4	//	2"	1"1/2						
1300	//	1638	1793	Øe 240	1"	1"1/2	1/2"	1"1/4	//	2"	2"						
1500	//	1602	1757	Øe 240	1"	1"1/2	1/2"	1"1/4	1"1/4	2"	2"						
2000	1524	1473	1629	Øe 240	1"	2"	1/2"	1"1/4	1"1/4	2"	2"						
2500	1794	1710	1879	Øe 240	1"	2"	1/2"	1"1/4	1"1/4	2"	2"						
3000	2294	2210	2369	Øe 240	1"	2"	1/2"	1"1/4	1"1/4	2"	2"						
4000	2302	2225	2397	Øe 240	1"	2"	1/2"	1"1/4	1"1/4	2"	2"						
5000	2319	2159	2404	Øe 240	1"	2"	1/2"	1"1/4	1"1/4	2"	2"						

COMPACT Model	Net Volume [litres]	Df	De	De (HE SERIE)	H	A	[mm]					
							H1	H2	H4	H6	H7	
2500	1552	1501	1657	Øe 240	1"	2"	1/2"	1"1/4	1"1/4	2"	2"	
3000	1551	1500	1656	Øe 240	1"	2"	1/2"	1"1/4	1"1/4	2"	2"	
4000	1809	1732	1904	Øe 240	1"	2"	1/2"	1"1/4	1"1/4	2"	2"	